

METROPOLITAN HOME'S

# SHOWTIME HOUSE

GRAMERCY PARK ★ NYC



## ABOUT THE SHOWTIME HOUSE

**Showtime Networks and Metropolitan Home present the Showtime House:** a transformation of a \$20 million, 19th century Gramercy Park townhouse into a beacon of modernism inspired by six Showtime original series. To create this fusion of entertainment and high style, Metropolitan Home has enlisted design's top stars – Jamie Drake, Tori Golub, Laura Kirar, Amy Lau, White Webb, Vicente Wolf, Johnny Grey, Luca Andrisani, Kristen Brant, Jim Zivic and Enea. This September, these exceptional talents will create visionary spaces that evoke the spirit of Showtime original series – **Dexter™**, **Californication**, **The Tudors**, **Weeds**, **The L-Word®** and **United States of Tara** – for inspiration as they transform each room into a modernist masterpiece.

## INSIDE THE HOUSE

### THE TUDORS Living Room by Laura Kirar

Passion, intrigue and the antics of the most head-rolling royal of all, Henry VIII, all play their part in **Laura Kirar's** imagination as she creates a provocative, yet contemplative, living room where the surly ruler can dial down his inner drama king. Kirar captures the spirit of the Tudors period and applies a modern spin by mixing in clean-lined silhouettes, bold graphic patterns and simple elegant furnishings that lighten the heavy look of Tudor times.



### CALIFORNICATION Writer's Study and Spa by Jamie Drake

A new bestseller may be just a few keyboard clicks away for Californication's Hank Moody now that **Jamie Drake** has taken him in hand and pointed him toward a new muse. With Moody as his model, Drake conjures up a sophisticated, slightly hedonistic writer's study and spa filled with thought-provoking, inspirational elements destined to help the distracted writer turn the page on his past and pen again.



## INSIDE THE HOUSE

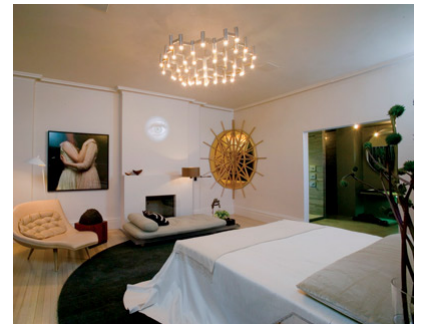
### THE L WORD Boudoir by Vicente Wolf

Focused on the fine art of seduction from an all-girl point-of-view, **Vicente Wolf** conjures up a boudoir designed for more than sleeping. Wolf captures the seductive and eccentric essence of this group of L.A. friends with a bedroom suite, glittering bathroom, and to-die-for shoe closet, all designed for casting aside the worries of the day with wild abandon.



### UNITED STATES OF TARA Master Bedroom by Tori Golub

Dark versus light, raw versus refined - these contrasting elements drive **Tori Golub** as she designs a dreamlike bedroom for a "crowd" of personalities that live within one character, Tara. Touching on aspects of Tara's multiple identities, Golub dreams up a stylishly surreal bedroom suite in which any, and all, of this modern-day Sybil's personas can find rest.



### WEEDS Lounge by White Webb

By torching her home and everything inside, *Weeds*' drug-dealing Nancy has opened the door for **White Webb** to help her embrace all things organic...legally. White Webb teams up with Mother Nature to create a chic living room lounge where Nancy can hide away and find comfort surrounded by natural elements like grasscloth-covered walls, a hemp rug, verdant greens and biomorphic shaped furniture.



### DEXTER Dining Room by Amy Lau

With a blood-splatter analyst-cum-vigilante killer as her inspiration, **Amy Lau** takes dining to a newly dramatic level. Dashing Dexter is focused on perfecting the craft of both his day and night jobs with the hope that the two worlds never collide. In turn, Lau serves up a room in which Dexter can spill red wine without anyone noticing and discard the chicken bones with abandon.

## INSIDE THE HOUSE



### **DEXTER** Kitchen by Johnny Grey Studios

Harnessing the softer side of our serial killer, **Johnny Grey** draws his inspiration from Dexter's South Florida lifestyle rather than his murderous profession. The artful kitchen reflects Miami's tropical locale and famed Art Deco architecture. Finally, a space where Dexter can focus on slicing and dicing veggies—and only veggies.



### **MEDIA ROOM** Media Room by Luca Andrisani

Clearly a room where no one will be in the dark, **Luca Andrisani's** media room utilizes 350 fluorescent light tubes in an innovative sculptural setting designed for viewing original Showtime-inspired videos on TV monitors mounted on 360-degree swivels. This three-dimensional media room has no 90-degree corners and every facet of the walls appears as if frozen in motion. Accentuating this mind-bending room design are artful building-block furnishings that can be reconfigured and stacked to create anything from seating and practical platforms, to architectural structures.

### **THE SHOWTIME LOUNGE** Lounge by Kirsten Brant

Inspired by the Showtime viewer, **Kirsten Brant's** room is incredibly inviting. Everything is in the pink in the cafe/lounge where luscious raspberry, fuchsia and rosy tones are perfectly paired with buttoned-up grey and charcoal hues. Bold graphic patterned walls add a retro feel as does a textured shag carpet and Studio 54-inspired L-shaped banquette that extends 25-feet along the walls. Wall-to-wall mirrors at opposite ends of the room create the illusion of a never-ending space and bounce the light.



### **SHOWTIME GARDEN** Landscaping by Enea Designs

Drawing inspiration from multiple Showtime series is a lush garden by **Enea Designs**. Tucked behind the house are two gathering spaces—a lounge and a dining area. An L-shaped seating area distinguishes the outdoor lounge where guests can relax in seclusion beneath a large shade umbrella and behind bamboo hedges that are reflective of plants featured in Dexter and Weeds. Zinc pots touch on the formality of the Tudors' 16th century lifestyle. A red rope canopy inspired by Dexter's forensic studies string art covers the dining area to provide protection from the sun and wind, and to create the enclosed feeling of an outdoor room.

